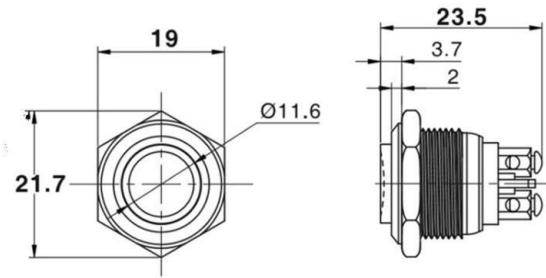


## METAL BUTTON SWITCH (WIRING TERMINAL)

IB16A-G10J/N/●

- Head Style (★) : G high flat round shape
- Switch Combination (□) : 10-1NO
- Conection type (■) : J terminal
- Hull Material (●) : S Stainless steel  
N Brass nickelage  
A Aluminium alloy anodize black
- Operation Type: Momentary
- Faceplate Thickness: 1~6mm



Tail configuration		Wiring terminal	
Switch specifications	3A/250VAC	5A/250VAC	
Contact resistance	< 50mΩ		
Insulation resistance	> 1000MΩ		
Dielectric Instensity	2000VAC		
Ambient Temperature	-20°C ~ +55°C		
Mechanical life	500,000 cycles		
Electrical life	50,000 cycles		
Panel thickness	1 ~ 10mm		
Nut torque	5 ~ 14Nm		
Operation pressure	4N About 4N		
Operation stroke	1.8mm About 1.8mm		
Protection level	IP67, IK08		
Material	Contact	Silver alloy	
	Button	Nickel plated brass/stainless steel	
	Enclosure	Nickel plated brass/stainless steel	

### METAL SWITCH DESCRIPTION

For Example: IB16D-P11Z-ER12V/S

The company code	Mounting hole size	Type	Head shape	Switch combination	Operation types	Operation types	LED color/Button color	Connection type	LED voltage
IB	8 Ø8mm 12 Ø12mm 16 Ø16mm 19 Ø19mm 22 Ø22mm 25 Ø25mm 28 Ø28mm 30 Ø30mm	A B C D E ...	P: Flat Q: Domed G: High flush X: Knob Y: Key switch	10: 1NO 1C: 1NC 11: 1NO1NC 22: 2NO2NC	F: Momentary Z: Self-locking/Latching M: Buzzer SM: Flicker buzzer	E: Ring D: Dot P: Power logo W: Words	R: Red O: Orange Y: Yellow G: Green B: Blue W: White	Y: Welded J: Wiriting terminal L: Screw terminal N: Metal PC: Plastic	2V/3V/6V/ 12V/24V/36V/ 48V/110V/220V

#### Surface Effect

Color select					Surface Effect				
R	G	O	B	Gold Anodized (G)	Brass nickled (N)	Bronze Plated (L)	Stainless Steel (S)	Black (A)	